

HISTORIC AREA OVERVIEW

PORT ARTHUR PROPER

AREA A	AREA D
AREA B	AREA E
AREA C	AREA F

SABINE PASS AREA

AREA G

SABINE PASS BATTLEGROUND PARK

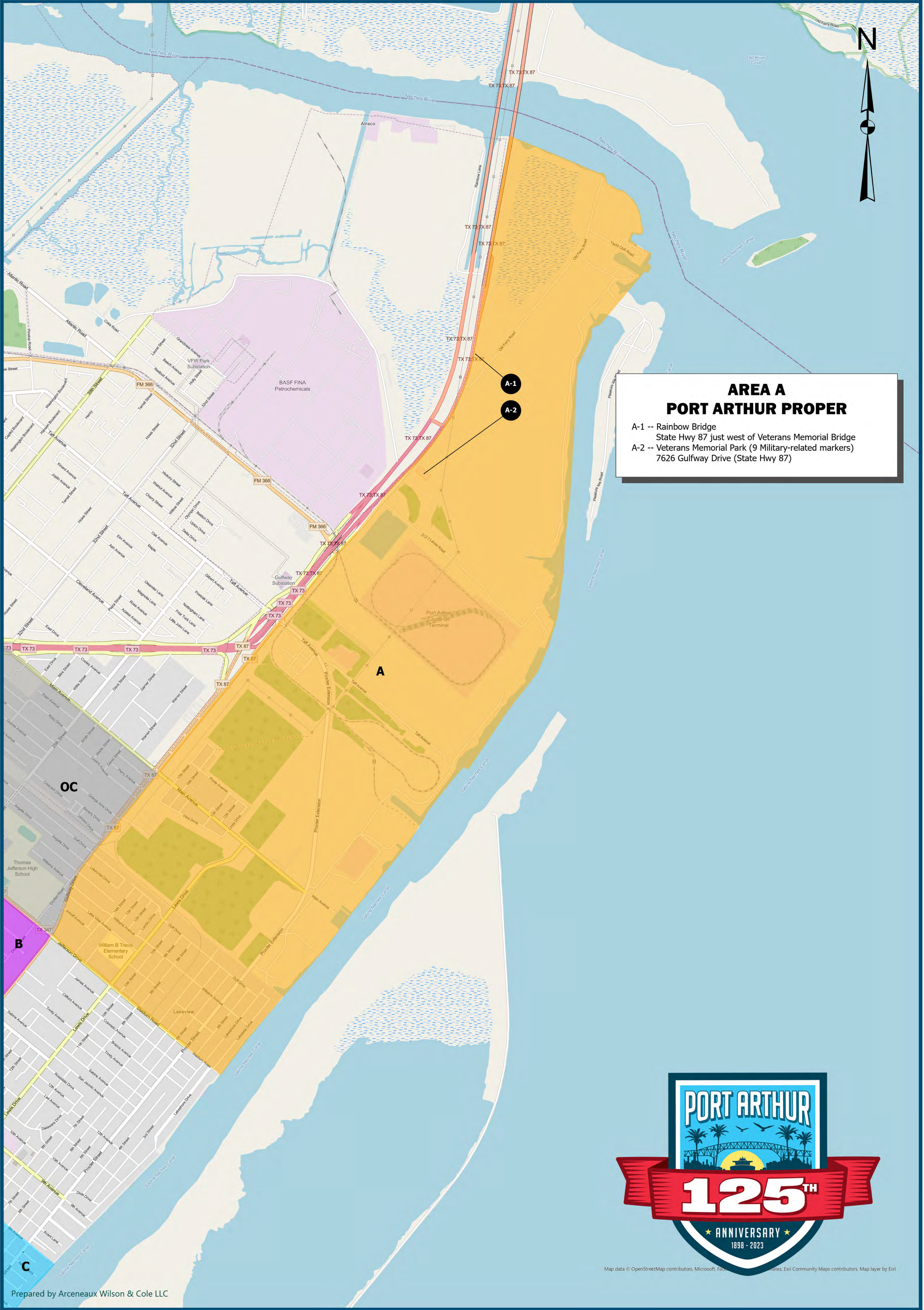
AREA H

PORT ARTHUR MARKERS THAT HAVE BEEN RELOCATED

AREA OC



PORT ARTHUR, TEXAS HISTORICAL MARKERS



**AREA A
PORT ARTHUR PROPER**

A-1 -- Rainbow Bridge
State Hwy 87 just west of Veterans Memorial Bridge

A-2 -- Veterans Memorial Park (9 Military-related markers)
7626 Gulfway Drive (State Hwy 87)



Map data © OpenStreetMap contributors, Microsoft, Esri, Esri Community Maps contributors, Map layer by Esri

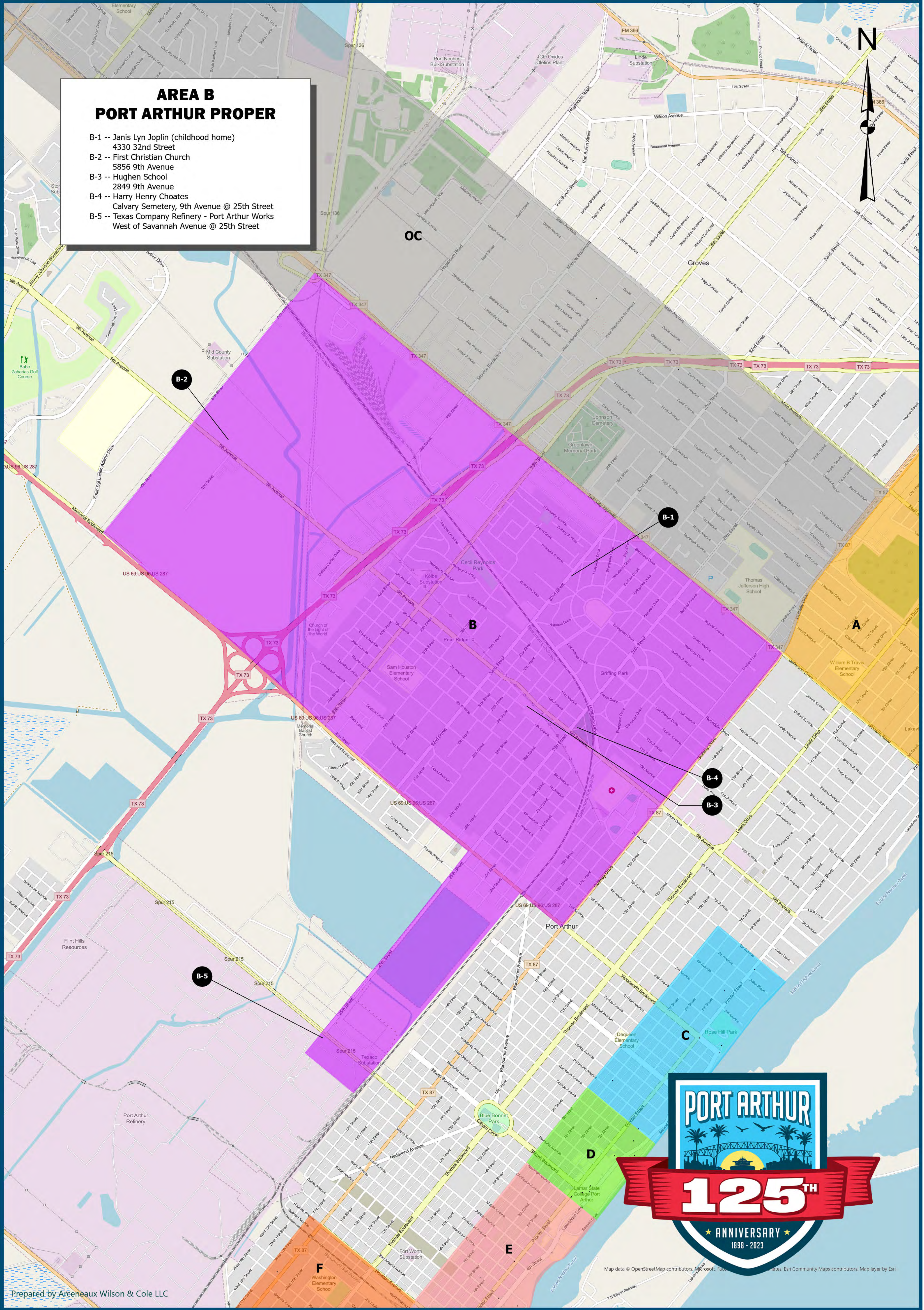


PORT ARTHUR, TEXAS HISTORICAL MARKERS



AREA B PORT ARTHUR PROPER

- B-1 -- Janis Lyn Joplin (childhood home)
4330 32nd Street
- B-2 -- First Christian Church
5856 9th Avenue
- B-3 -- Hughen School
2849 9th Avenue
- B-4 -- Harry Henry Choates
Calvary Semetary, 9th Avenue @ 25th Street
- B-5 -- Texas Company Refinery - Port Arthur Works
West of Savannah Avenue @ 25th Street



Map data © OpenStreetMap contributors, Microsoft, Esri, Esri Community Maps contributors, Map layer by Esri

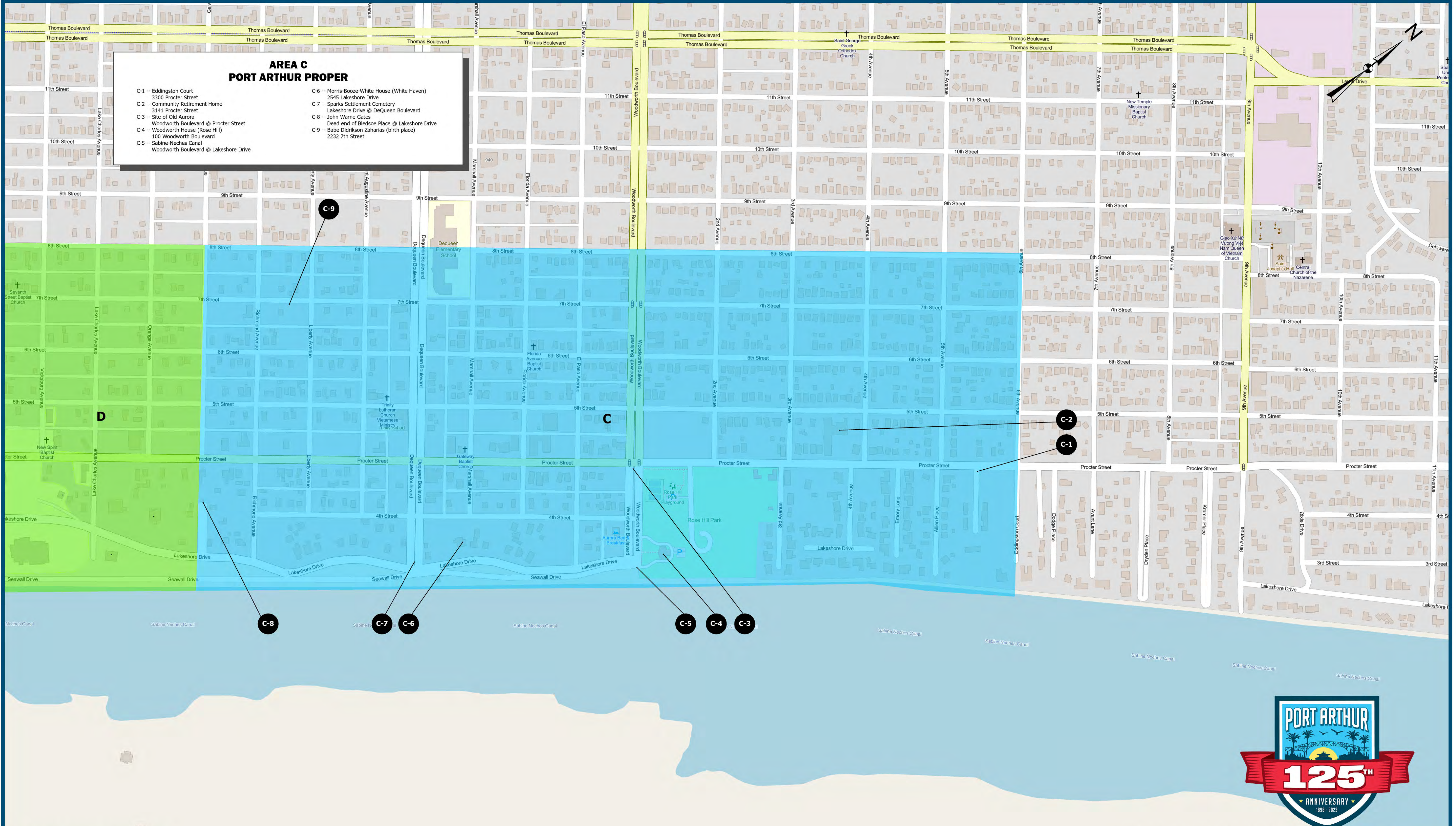


PORT ARTHUR, TEXAS HISTORICAL MARKERS



AREA C PORT ARTHUR PROPER

- C-1 -- Eddington Court
3300 Procter Street
- C-2 -- Community Retirement Home
3141 Procter Street
- C-3 -- Site of Old Aurora
Woodworth Boulevard @ Procter Street
- C-4 -- Woodworth House (Rose Hill)
100 Woodworth Boulevard
- C-5 -- Sabine-Neches Canal
Woodworth Boulevard @ Lakeshore Drive
- C-6 -- Morris-Booze-White House (White Haven)
2545 Lakeshore Drive
- C-7 -- Sparks Settlement Cemetary
Lakeshore Drive @ DeQueen Boulevard
- C-8 -- John Warne Gates
Dead end of Bledsoe Place @ Lakeshore Drive
- C-9 -- Babe Didrikson Zaharias (birth place)
2232 7th Street



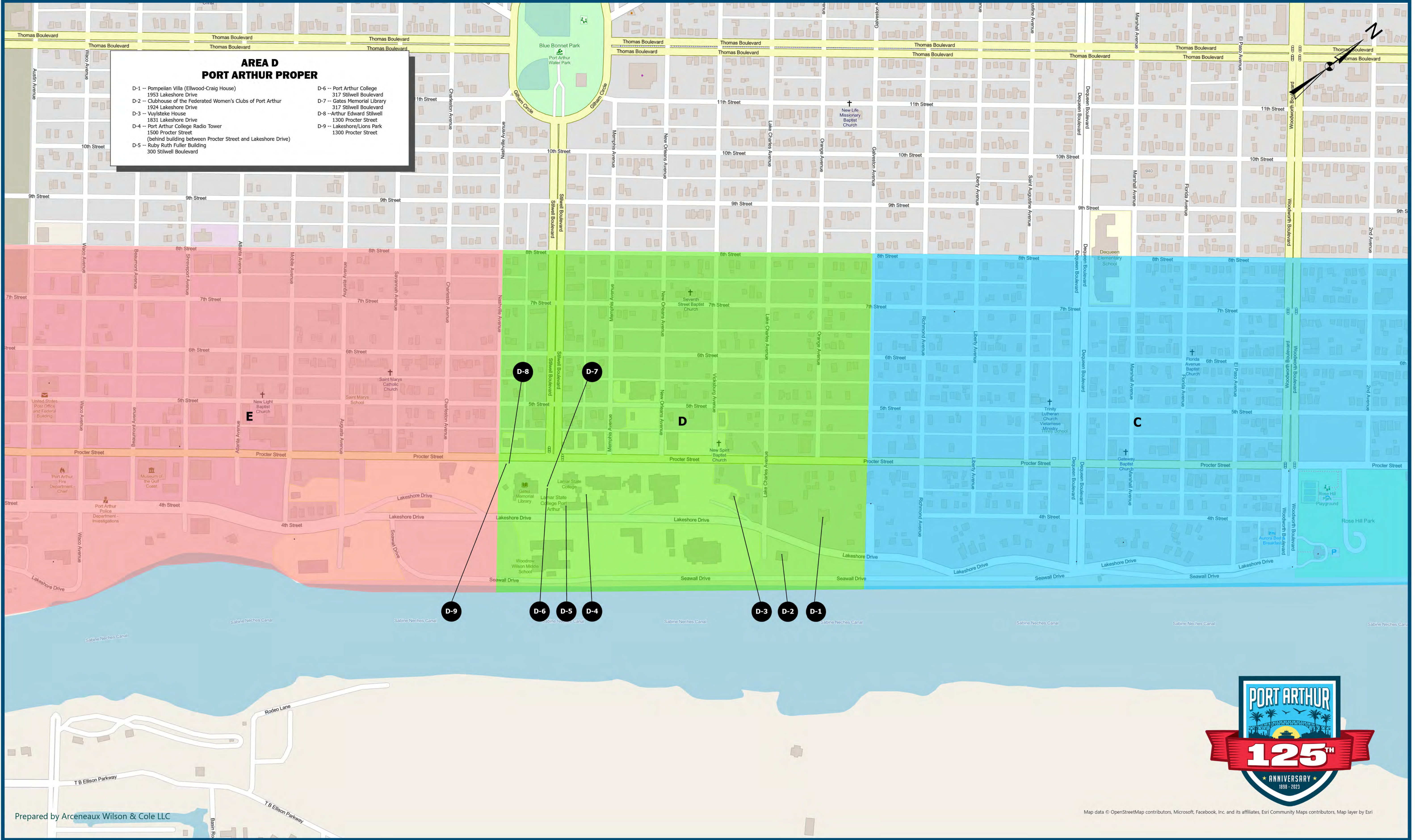


PORT ARTHUR, TEXAS HISTORICAL MARKERS



AREA D PORT ARTHUR PROPER

- D-1 -- Pompeian Villa (Ellwood-Craig House)
1953 Lakeshore Drive
- D-2 -- Clubhouse of the Federated Women's Clubs of Port Arthur
1924 Lakeshore Drive
- D-3 -- Wuysteke House
1831 Lakeshore Drive
- D-4 -- Port Arthur College Radio Tower
1500 Procter Street
(behind building between Procter Street and Lakeshore Drive)
- D-5 -- Ruby Ruth Fuller Building
300 Stilwell Boulevard
- D-6 -- Port Arthur College
317 Stilwell Boulevard
- D-7 -- Gates Memorial Library
317 Stilwell Boulevard
- D-8 -- Arthur Edward Stilwell
1300 Procter Street
- D-9 -- Lakeshore/Lions Park
1300 Procter Street



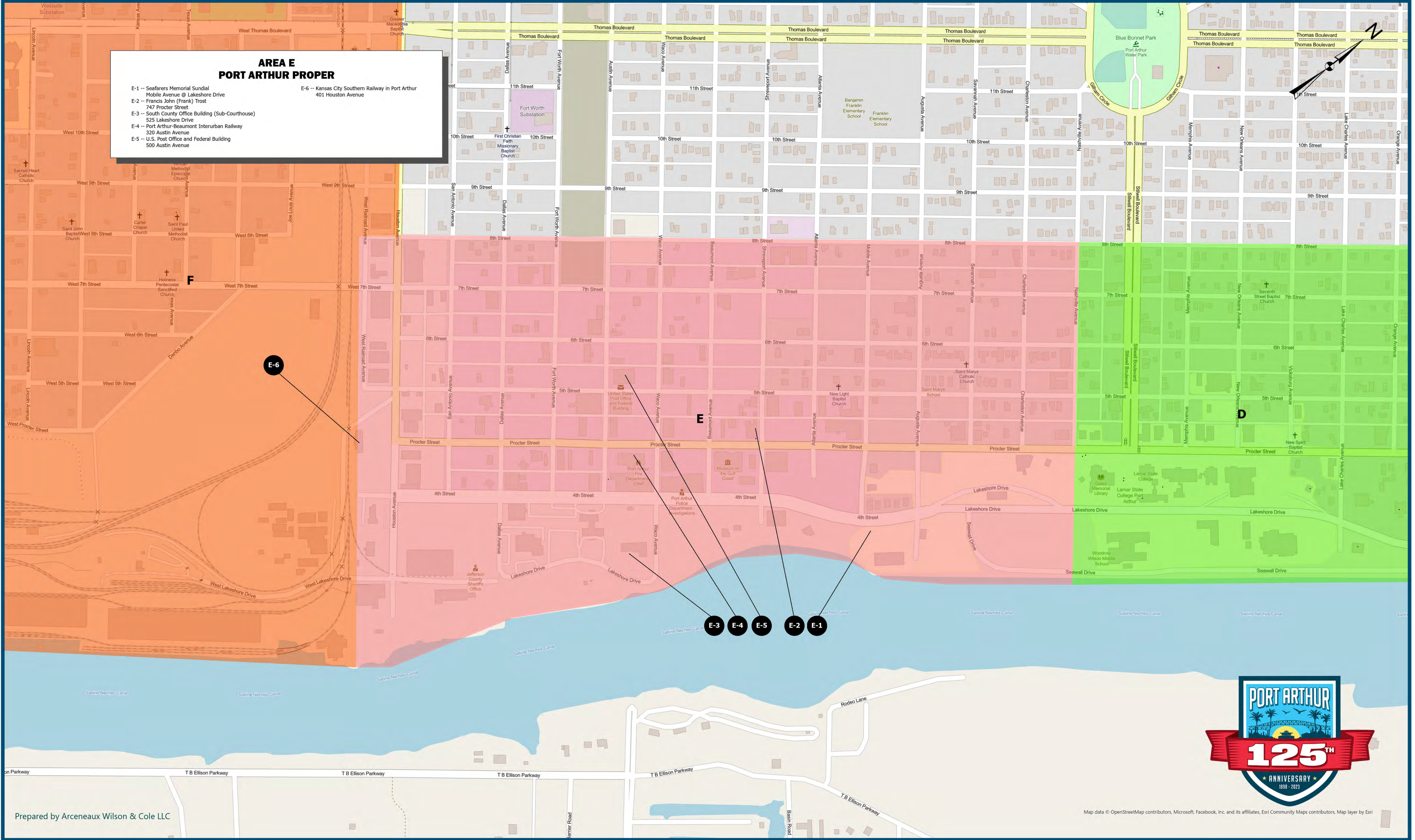


PORT ARTHUR, TEXAS HISTORICAL MARKERS



AREA E PORT ARTHUR PROPER

- E-1 -- Seafarers Memorial Sundial
Mobile Avenue @ Lakeshore Drive
- E-2 -- Francis John (Frank) Trost
747 Procter Street
- E-3 -- South County Office Building (Sub-Courthouse)
525 Lakeshore Drive
- E-4 -- Port Arthur-Beaumont Interurban Railway
320 Austin Avenue
- E-5 -- U.S. Post Office and Federal Building
500 Austin Avenue
- E-6 -- Kansas City Southern Railway in Port Arthur
401 Houston Avenue



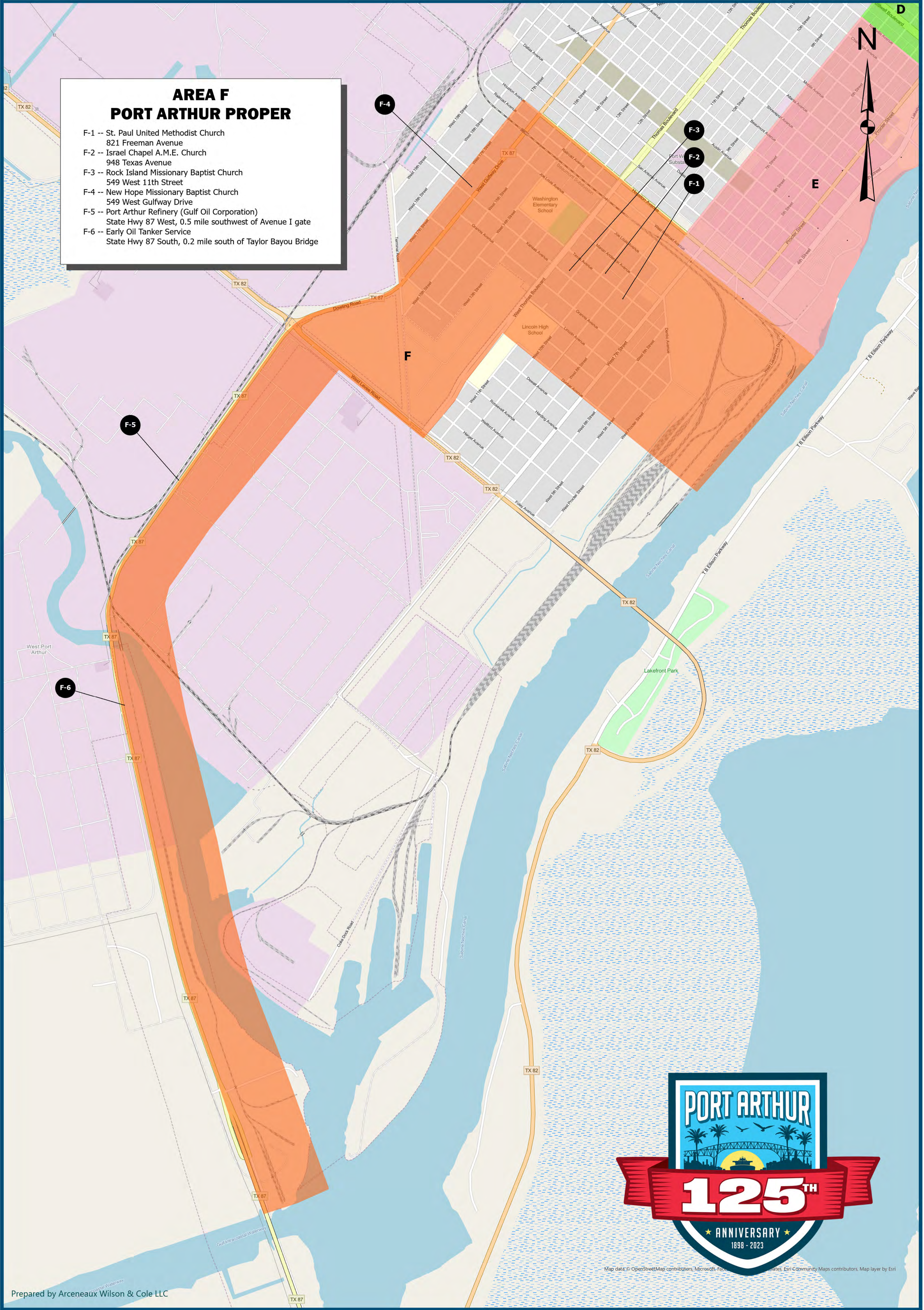


PORT ARTHUR, TEXAS HISTORICAL MARKERS



AREA F PORT ARTHUR PROPER

- F-1 -- St. Paul United Methodist Church
821 Freeman Avenue
- F-2 -- Israel Chapel A.M.E. Church
948 Texas Avenue
- F-3 -- Rock Island Missionary Baptist Church
549 West 11th Street
- F-4 -- New Hope Missionary Baptist Church
549 West Gulfway Drive
- F-5 -- Port Arthur Refinery (Gulf Oil Corporation)
State Hwy 87 West, 0.5 mile southwest of Avenue I gate
- F-6 -- Early Oil Tanker Service
State Hwy 87 South, 0.2 mile south of Taylor Bayou Bridge



Map data © OpenStreetMap contributors, Microsoft, Esri, Esri Community Maps contributors, Map layer by Esri

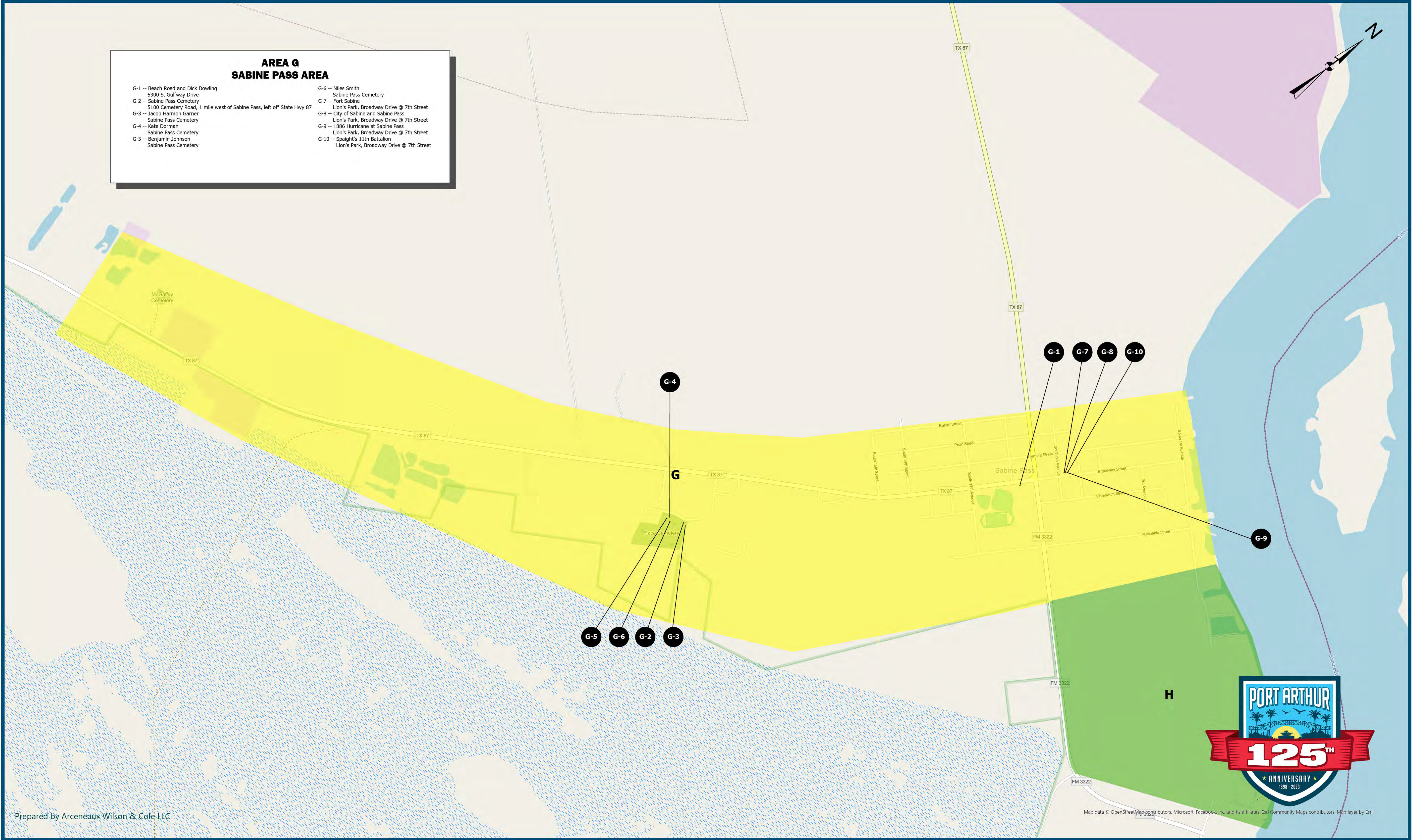


PORT ARTHUR, TEXAS HISTORICAL MARKERS



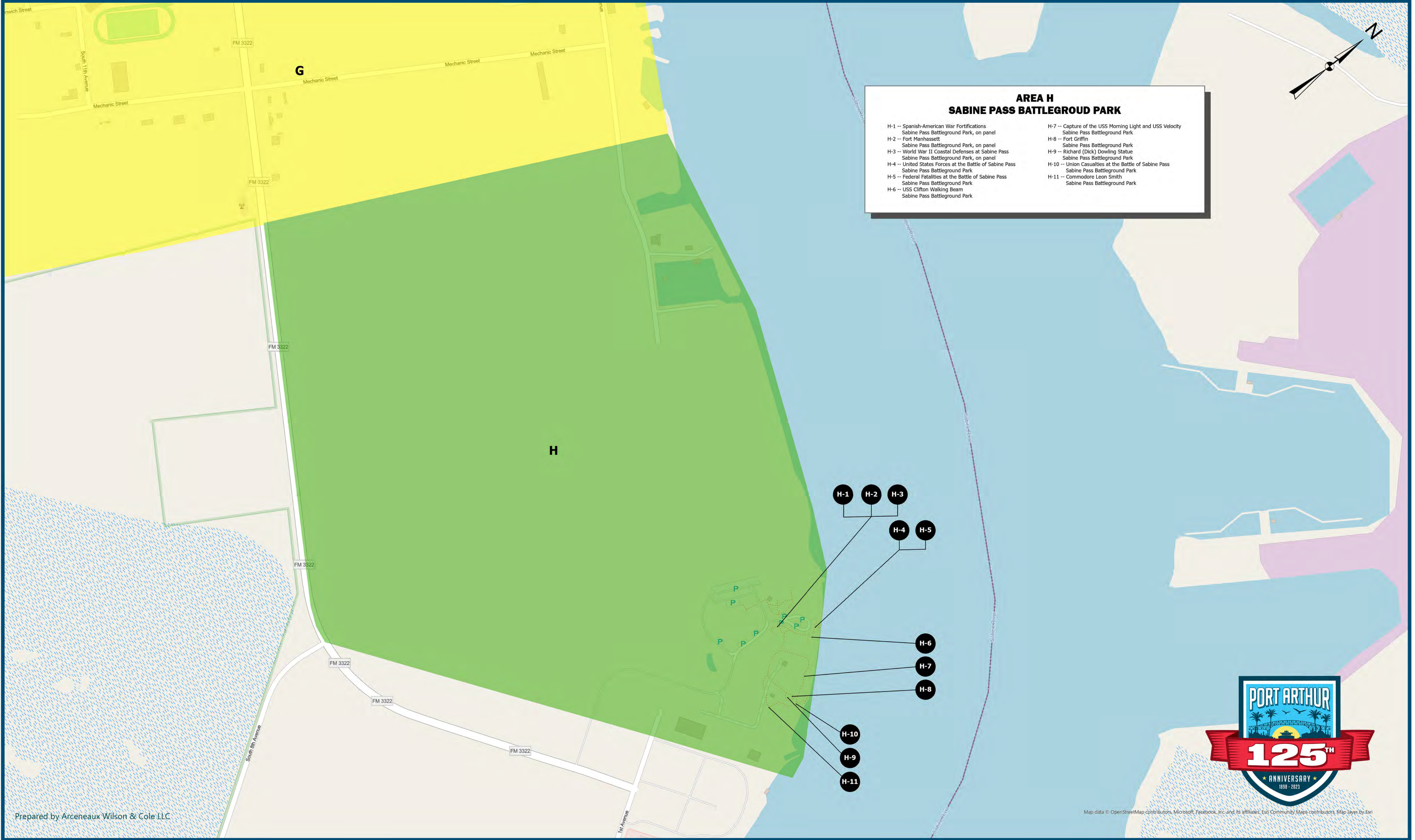
AREA G SABINE PASS AREA

- G-1 -- Beach Road and Dick Dowling
5300 S. Gulfway Drive
- G-2 -- Sabine Pass Cemetery
5100 Cemetery Road, 1 mile west of Sabine Pass, left off State Hwy 87
- G-3 -- Jacob Harmon Garner
Sabine Pass Cemetery
- G-4 -- Kate Dorman
Sabine Pass Cemetery
- G-5 -- Benjamin Johnson
Sabine Pass Cemetery
- G-6 -- Niles Smith
Sabine Pass Cemetery
- G-7 -- Fort Sabine
Lion's Park, Broadway Drive @ 7th Street
- G-8 -- City of Sabine and Sabine Pass
Lion's Park, Broadway Drive @ 7th Street
- G-9 -- 1886 Hurricane at Sabine Pass
Lion's Park, Broadway Drive @ 7th Street
- G-10 -- Spaight's 11th Battalion
Lion's Park, Broadway Drive @ 7th Street





PORT ARTHUR, TEXAS HISTORICAL MARKERS



**AREA H
SABINE PASS BATTLEGROUND PARK**

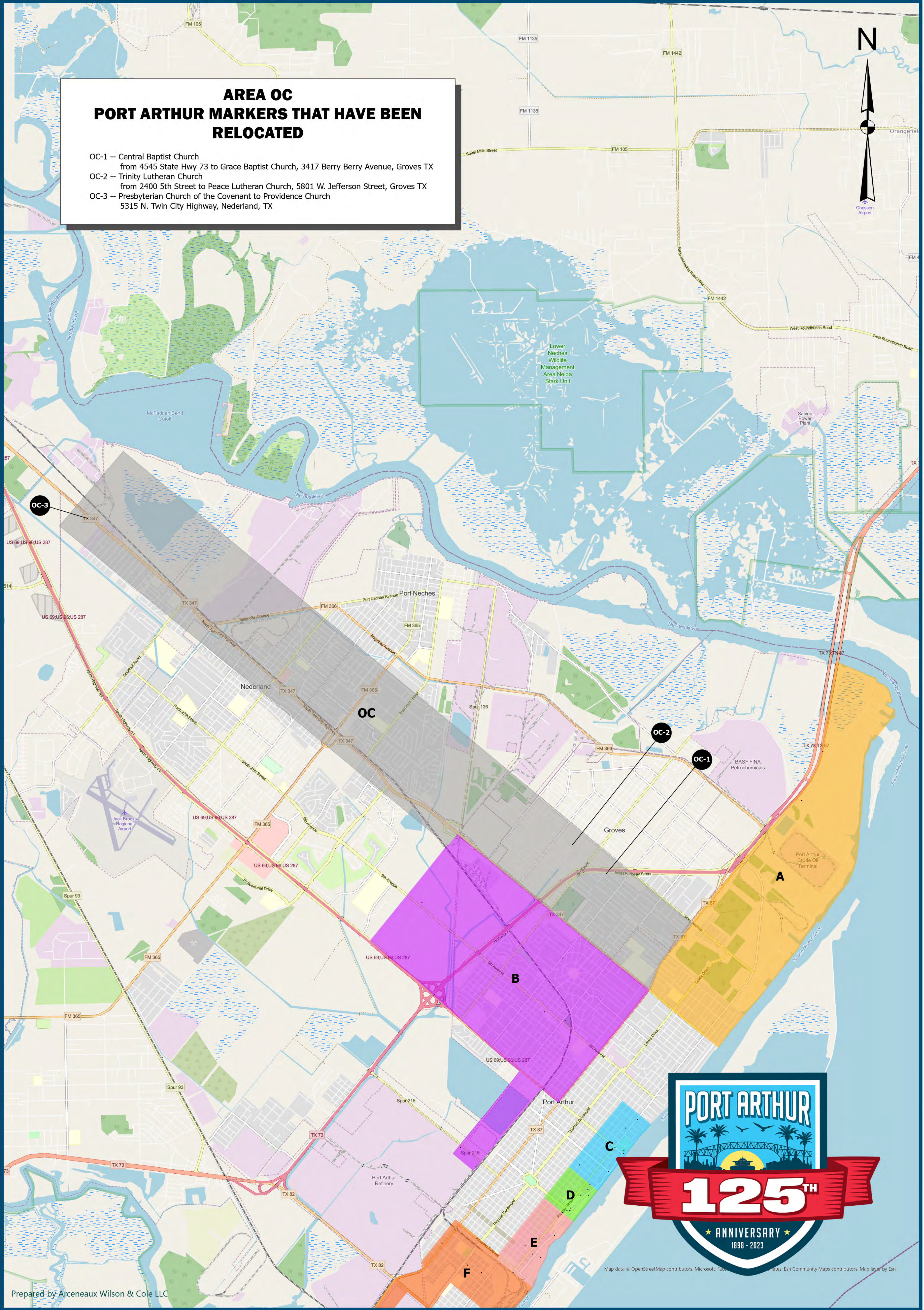
H-1 -- Spanish-American War Fortifications Sabine Pass Battleground Park, on panel	H-7 -- Capture of the USS Morning Light and USS Velocity Sabine Pass Battleground Park
H-2 -- Fort Manhasset Sabine Pass Battleground Park, on panel	H-8 -- Fort Griffin Sabine Pass Battleground Park
H-3 -- World War II Coastal Defenses at Sabine Pass Sabine Pass Battleground Park, on panel	H-9 -- Richard (Dick) Dowling Statue Sabine Pass Battleground Park
H-4 -- United States Forces at the Battle of Sabine Pass Sabine Pass Battleground Park	H-10 -- Union Casualties at the Battle of Sabine Pass Sabine Pass Battleground Park
H-5 -- Federal Fatalities at the Battle of Sabine Pass Sabine Pass Battleground Park	H-11 -- Commodore Leon Smith Sabine Pass Battleground Park
H-6 -- USS Clifton Walking Beam Sabine Pass Battleground Park	

- H-1
- H-2
- H-3
- H-4
- H-5
- H-6
- H-7
- H-8
- H-9
- H-10
- H-11



AREA OC PORT ARTHUR MARKERS THAT HAVE BEEN RELOCATED

- OC-1 -- Central Baptist Church
from 4545 State Hwy 73 to Grace Baptist Church, 3417 Berry Berry Avenue, Groves TX
- OC-2 -- Trinity Lutheran Church
from 2400 5th Street to Peace Lutheran Church, 5801 W. Jefferson Street, Groves TX
- OC-3 -- Presbyterian Church of the Covenant to Providence Church
5315 N. Twin City Highway, Nederland, TX



Map data © OpenStreetMap contributors, Microsoft, Facebook, Esri, DeLorme, Swireid, Esri Community Maps contributors, Map layer by Esri